

Nillumbik Landcare Network



Helping Landcare groups to help landholders care for land and nature

Nillumbik Landcare Network

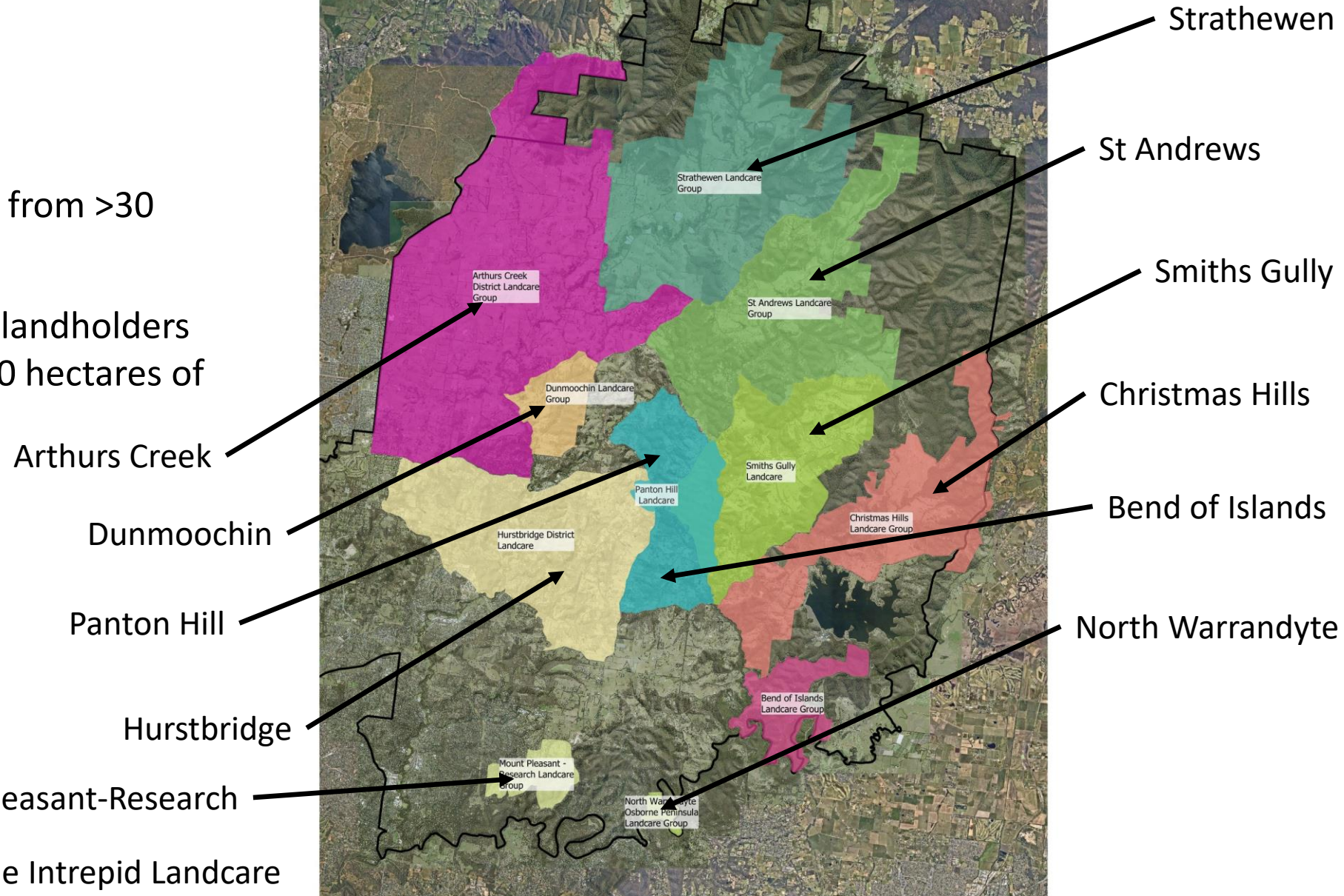


A volunteer-based organisation that brings together and supports the twelve Landcare groups operating within Nillumbik, each of which are independent organisations.

Governed by a volunteer board made up of representatives of each of the member groups.

Nillumbik Landcare Network

- formed in 2013
- 12 Landcare Groups ranging from >30 years old to <1 year old
- combined membership 480 landholders managing an estimated 6500 hectares of private land



and North East Melbourne Intrepid Landcare

Strategic planning sessions helped us identify what we value and act to protect and make healthy:



Dry forests and woodlands



Wet and damp forests



Waterways and wetlands



Cleared rural land



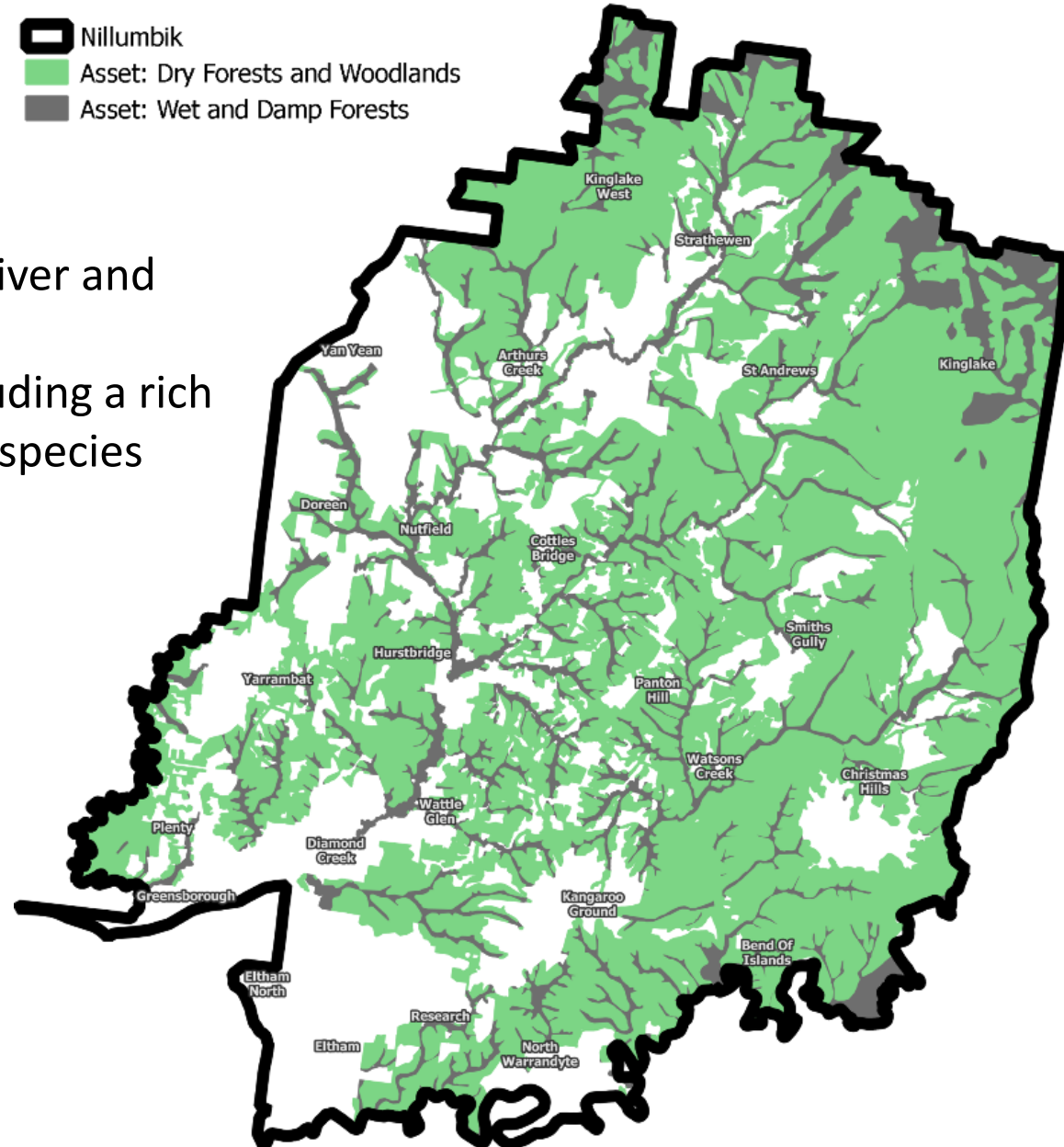
Culture of community land stewardship

Forests

28,200 hectares - 19,900 ha on private land

Valued because:

- they are extensive and connect Kinglake NP to the Yarra River and Warrandyte SP
- they provide essential habitat for a myriad of species including a rich diversity of flora and fauna including rare and threatened species

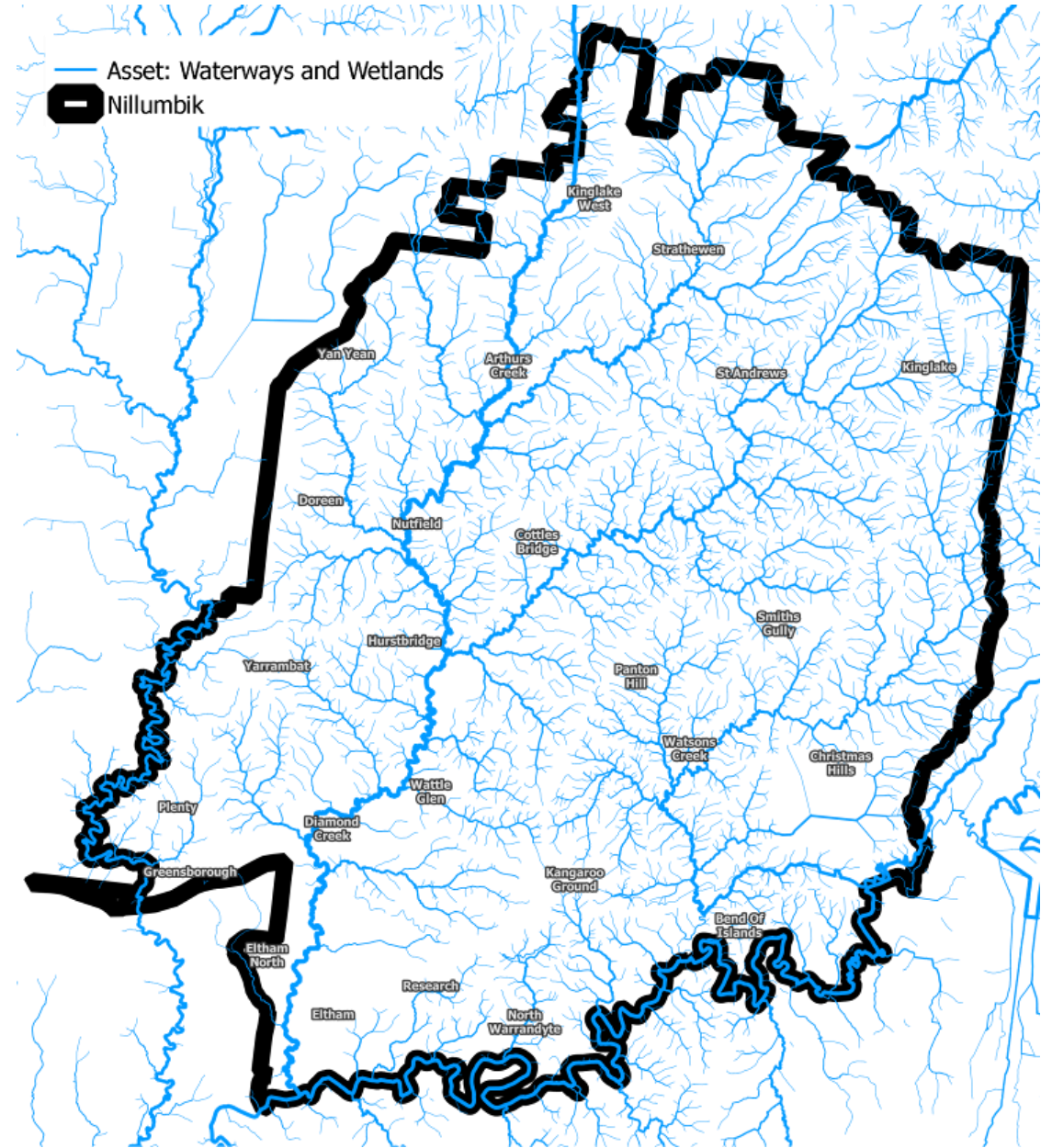


Waterways

Diamond Ck, Arthurs Ck, Watsons Ck, Yarra River, Plenty River

Valued because

- they carry life-giving water from the slopes of the Kinglake Range to the Yarra River
- they provide essential habitat and drought refuges for many species

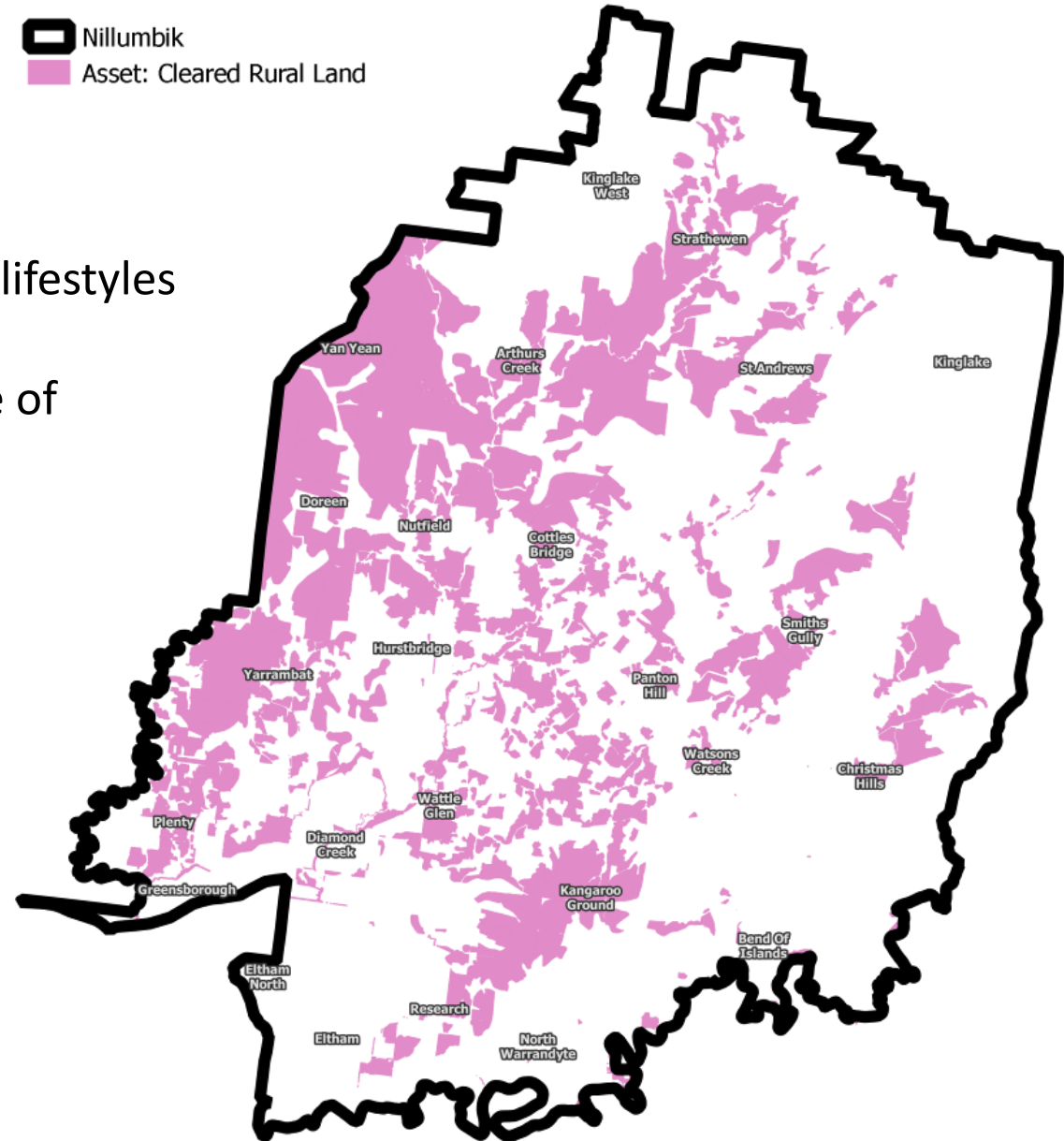


Cleared rural land

10,300 hectares

Valued because:

- it supports commercial farming, hobby farming and rural lifestyles including horse keeping
- it makes an important contribution to the rural landscape of Nillumbik
- it can play a key role in Melbourne's future 'food bowl'

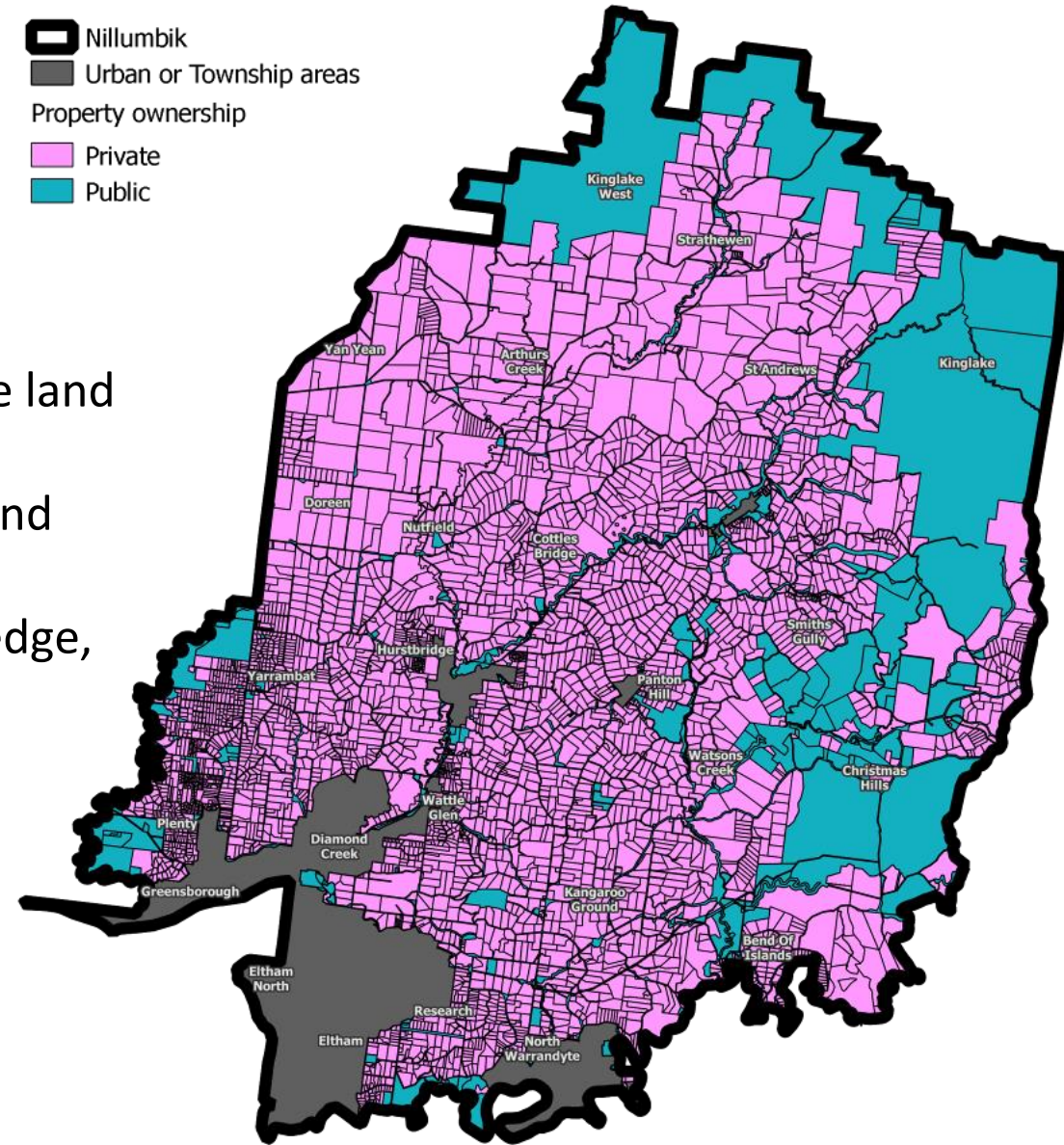


Culture of community land stewardship

63,500 people in Nillumbik; 15,700 in Green Wedge
39,600 hectares of Green Wedge; 31,200 ha privately-owned

Valued because:

- it is when people see themselves as stewards, feel a deep connection to, and understand and take responsibility for the land and nature in their care
- it is when people are well-connected to each other socially and support each other
- it respects and builds upon Wurundjeri Woi Wurrung knowledge, culture and aspirations



So what does Landcare do?





Help people to learn about land and nature, and develop their sense of stewardship



Build cooperation and help people work together



Help people overcome hurdles to taking action



Make equipment available that helps people care for their land and nature



Create opportunities for people to meet their neighbours



Create opportunities for people to learn about Wurundjeri Woi Wurrung culture



Voluntarily plant indigenous vegetation and remove weeds

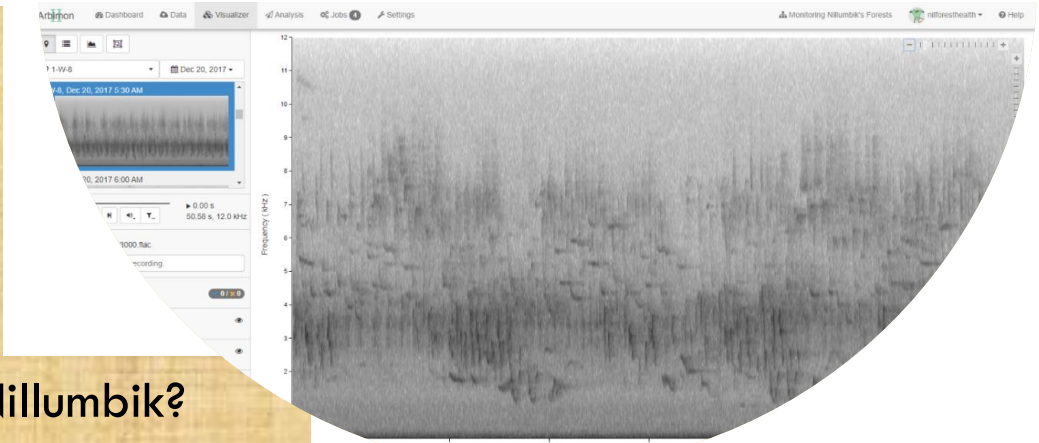
Forest Health Monitoring



MUSEUMS
VICTORIA

- How many different species are found across Nillumbik?
- Which indicator species have been found?
- Where are they?
- How does this change over time?

- Acoustic data
 - Acoustic indices
 - Indicator species assessments
- Camera images
 - Animals seen



Innovate, trial, break new ground

Nillumbik Landcare Network



Helping Landcare groups to help landholders care for land and nature